

dropⁱⁿ assembly and use instructions

Contents of the parcel 1

- drop'in is composed of 4 principal elements :
 - a lower part (the base)
 - an upper part (receiving the tube)
 - the tube itself
 - the container for butts
- A nylon nutt (to fix the tube)
- A set of keys
- A top (to close the upper part once stuffed)



The drop'in in 3 parts (tube in the bottom) 2



Remove the tube from its packaging 3



And slip the tube into the upper part 4



Fix the tube with the nylon nutt and turn it off tightly 5



The drop'in upper part is ready 6



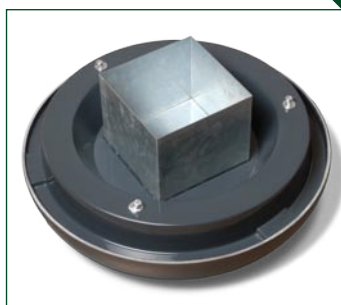
Under the container, you can either stuff the drop'in with 25 kilos of sand... 7



Or simply fix it to the ground (Drill 3 holes into the outside part of the container by following the 3 indicated points) 8



Close the container with its top 9



The lower part of the container is ready 10



The upper part of the Drop In fixes itself with the 3 lugs. Present it vertically before rotate it clockwise until it stops 11



The Drop in can be locked 12



Your Drop in is ready for use 13



The container is easy to reach to be emptied once full (contains approximately 2500 butts) 14